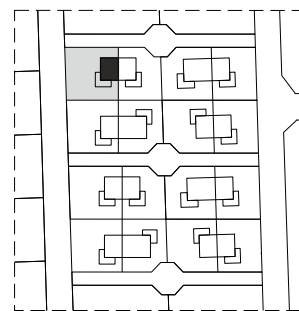


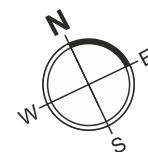
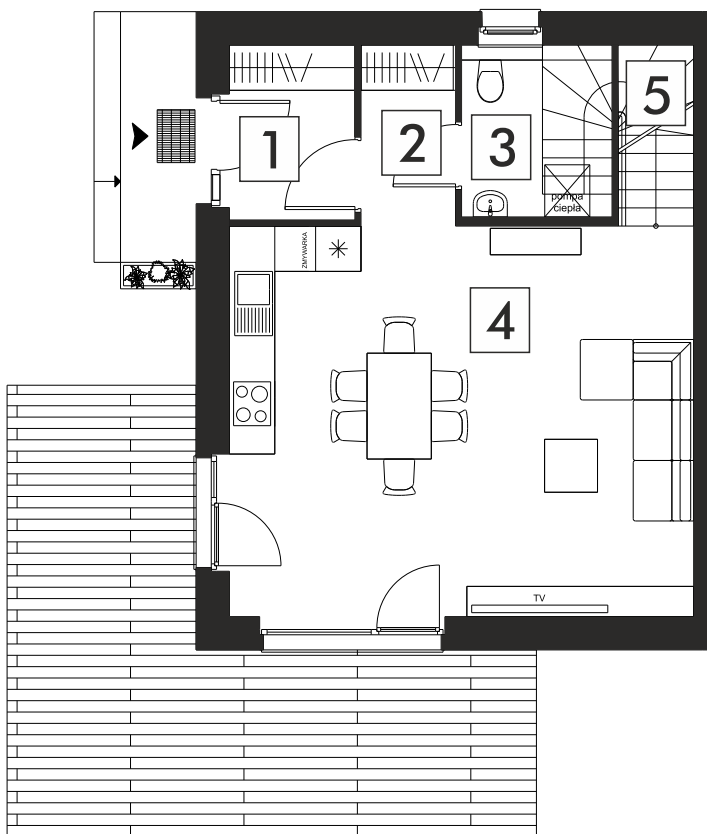
# ŁOPUCHOWO

SĄSIEDZTWA

dom nr 195/1



parter



parter

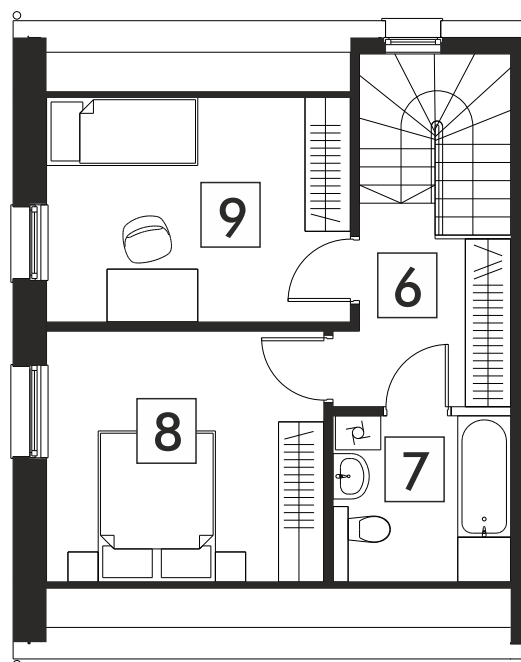
- 1 - przedsionek - 3,81 m<sup>2</sup>
- 2 - korytarz - 2,96 m<sup>2</sup>
- 3 - wc - 4,48 m<sup>2</sup>
- 4 - salon z kuchnią - 31,00 m<sup>2</sup>
- 5 - schody - 4,45 m<sup>2</sup>

pietro

- 6 - korytarz - 5,23 m<sup>2</sup>
- 7 - łazienka - 5,14 m<sup>2</sup>
- 8 - sypialnia - 11,93 m<sup>2</sup>
- 9 - pokój - 12,18 m<sup>2</sup>

dom o pow. 81,18 m<sup>2</sup>

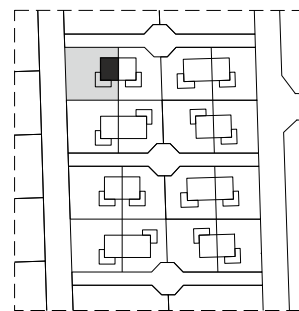
pietro



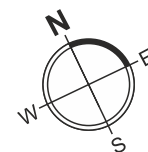
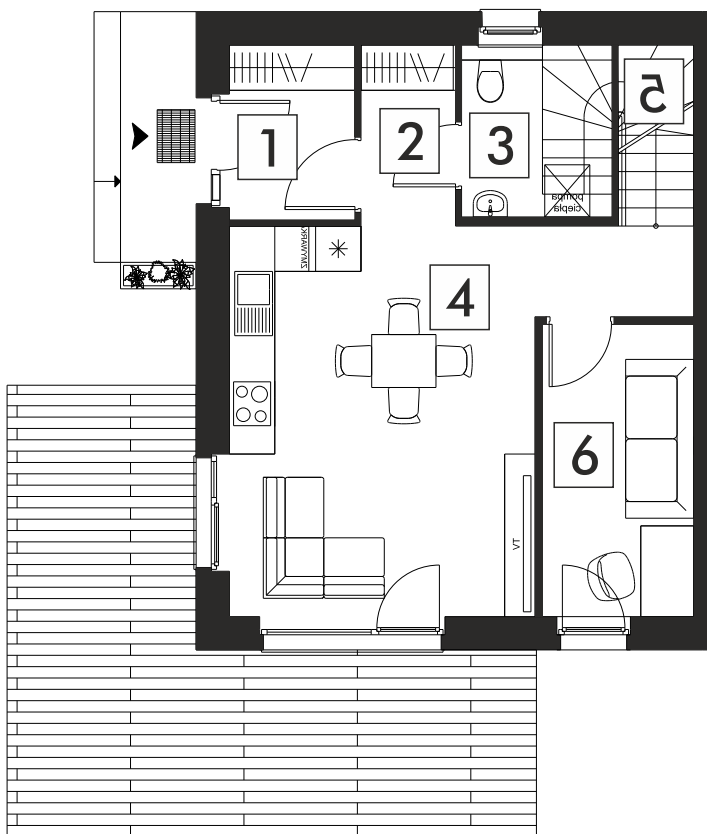
# ŁOPUCHOWO

SĄSIEDZTWA

dom nr 195/1



parter



parter

- 1 - przedsiónek - 3,81 m<sup>2</sup>
- 2 - korytarz - 2,96 m<sup>2</sup>
- 3 - wc - 4,48 m<sup>2</sup>
- 4 - salon z kuchnią - 23,27 m<sup>2</sup>
- 5 - schody - 4,45 m<sup>2</sup>
- 6 - gabinet - 7,73 m<sup>2</sup>

pietro

- 6 - korytarz - 5,23 m<sup>2</sup>
- 7 - łazienka - 5,14 m<sup>2</sup>
- 8 - sypialnia - 11,93 m<sup>2</sup>
- 9 - pokój - 12,18 m<sup>2</sup>

dom o pow. 81,18 m<sup>2</sup>

pietro

